



## Grosvenor House Court, Mildenhall, Suffolk, IP28 7DG

Rent - £1,650 PCM

Deposit - £1,903

Spacious 4-bedroom detached family home located in a popular development just minutes from RAF Mildenhall. This well-presented property offers excellent accommodation, including a newly renovated kitchen, separate dining room, and a bright, airy living room with access to the rear garden.

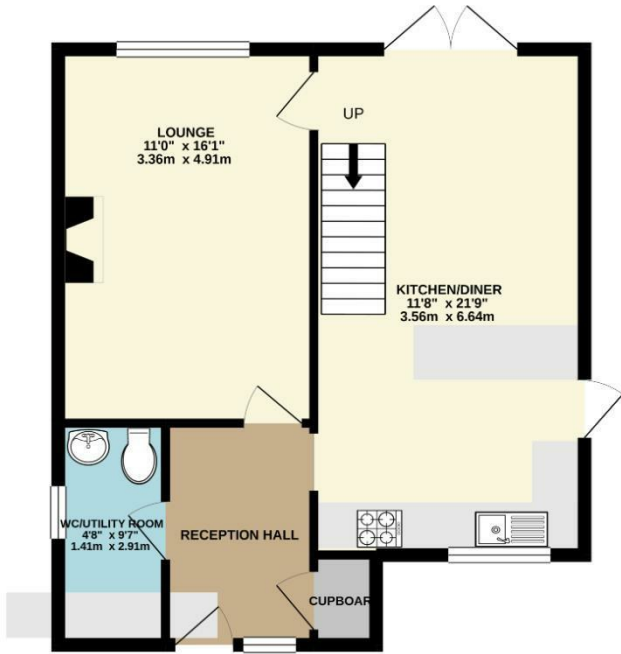
Upstairs features four good-sized bedrooms, a modern family bathroom, and plenty of storage throughout. The property also benefits from a downstairs WC, gas central heating, and double glazing.

- MODERN DETACHED HOUSE
- 4 GOOD SIZED BEDROOMS
- SPACIOUS KITCHEN/DINING AREA
- FAMILY BATHROOM, EN-SUITE & CLOAKROOM
- ENCLOSED GARDEN
- CLOSE TO RAF BASES
- GAS HEATING
- APPROXIMATE SIZE - 1089 SQ FT
- PETS CONSIDERED
- GARAGE & PARKING

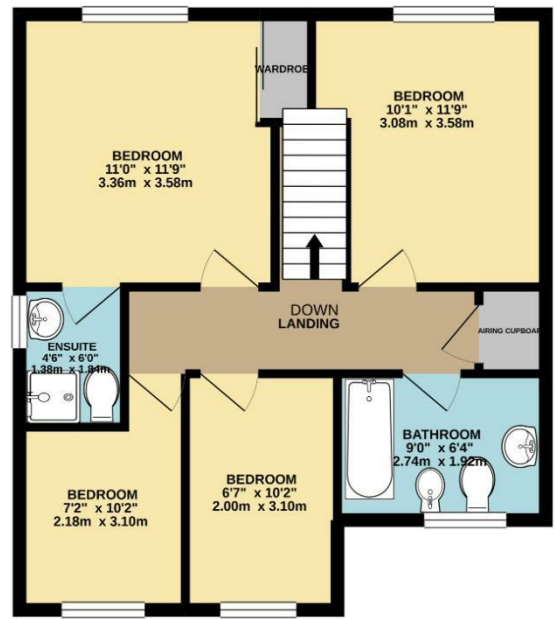


Council Tax Band: - EPC Rating: D 67

GROUND FLOOR  
542 sq.ft. (50.3 sq.m.) approx.



1ST FLOOR  
548 sq.ft. (50.9 sq.m.) approx.



TOTAL FLOOR AREA : 1089 sq.ft. (101.2 sq.m.) approx.

Whilst every attempt has been made to ensure the accuracy of the floorplan contained here, measurements of doors, windows, rooms and any other items are approximate and no responsibility is taken for any error, omission or mis-statement. This plan is for illustrative purposes only and should be used as such by any prospective purchaser. The services, systems and appliances shown have not been tested and no guarantee as to their operability or efficiency can be given.  
Made with Metropax ©2021

